



OFFICE: 972-930-9942
FAX: 972-930-9962
P.O. Box 1108
Dallas, TX 75001

monitor and manage industrial networks and real-world devices

www.coisoftware.com

Industrial SNMP OPC Server Version 4.0 Connectivity Guide

For Rockwell Automation RSVIEW32 Version 7.20.00 (CPR7)

The purpose of this white paper is to teach the user how to connect Industrial SNMP OPC Server to Rockwell Automation's RSVIEW32 HMI system via OPC.

Note: It is assumed that you have configured your iSNMP OPC Server application with the iSNMP Editor and have already configured your network devices for monitoring. If you have not completed this action please do so before beginning the connection to RSVIEW 32. The help files provided with iSNMP OPC Server will guide you through the process of configuring network devices for SNMP monitoring.



OFFICE: 972-930-9942
FAX: 972-930-9962
P.O. Box 1108
Dallas, TX 75001



Table of Contents

<i>Prerequisites</i>	3
<i>Section 1 - Configure Node</i>	3
<i>Section 2 – Configuring Tags</i>	5

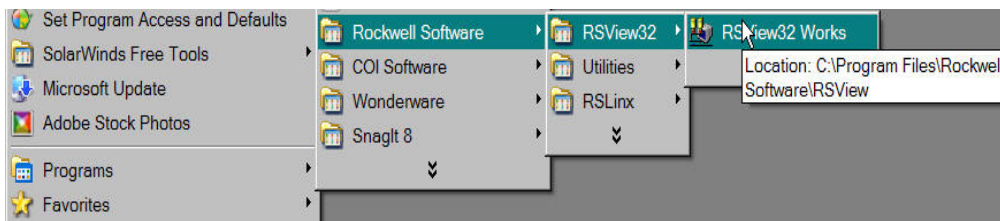
Prerequisites

- Make sure you have iSNMP installed on the same machine or a network connected server.
- You have already discovered and defined your network devices within the iSNMP Editor.

Section 1 - Configure Node

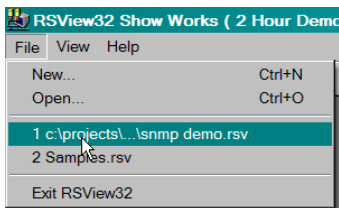
1. Launch RSView32:

Go to: Start>Programs>Rockwell Software>RSView32>RSView32 Works

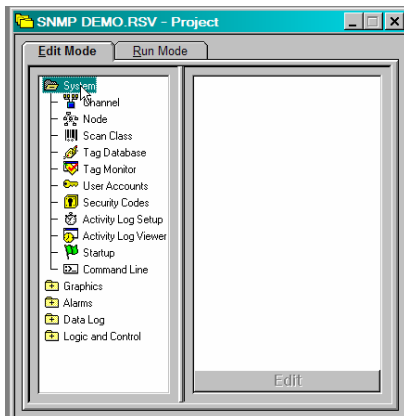


2. Open RSView32 Project:

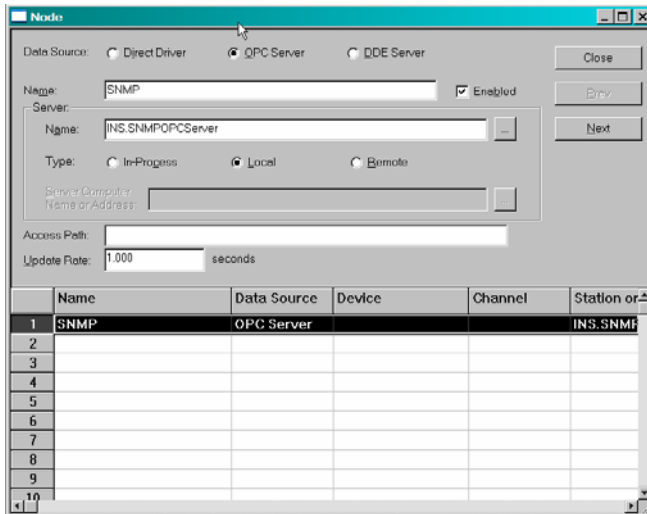
Open the **Project** that you wish to add SNMP monitoring to by selecting **Open**, or create a **New** project by selecting **New** from the **File** menu.



Once the **Project** dialog window is open, double click the **System** folder icon.




Double click the **Node** icon and a new dialog box will appear, as seen below:

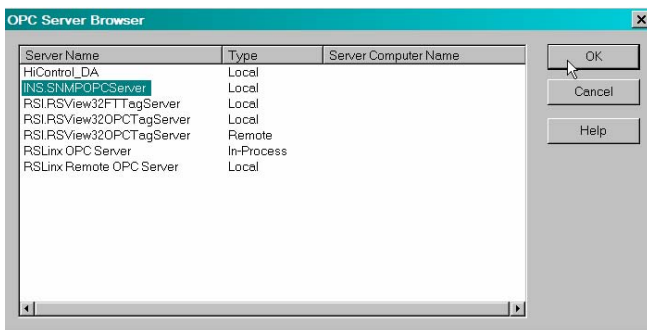



From the **Node Definition** dialog box, you will be able to assign Node information to the devices that you wish to monitor.

Data Source: Select OPC Server as the **Data Source** type.

Name: Assign a unique name for the iSNMP OPC Server that you are communicating to.

Server Name: Select the **Browse** button , and browse for the iSNMP OPC Server. Select *INS.SNMPOPCServer* and then select **OK**.



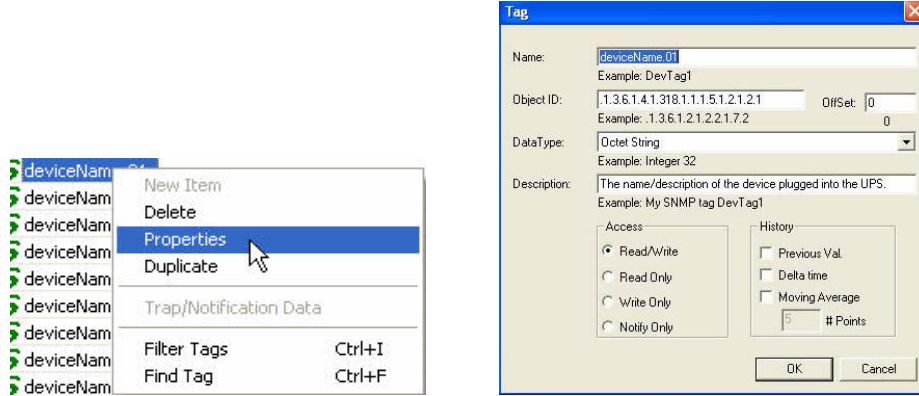
Type: Select **Local** if the iSNMP OPC Server is running locally. If the iSNMP PC Server is running on another network-connected computer then select **Remote** and use the Browse button  to locate this computer on the network or type the TCPIP address of the computer.

The full Access Path to the iSNMP OPC Server will be required when connecting to a remote computer. This is the installed path to the iSNMP OPC Server (i.e. C:\Program Files\COI Software\IndustrialSNMP\bin\INSOPCServer.exe)

You have now configured an **RSView32 Node** OPC topic for monitoring network devices.

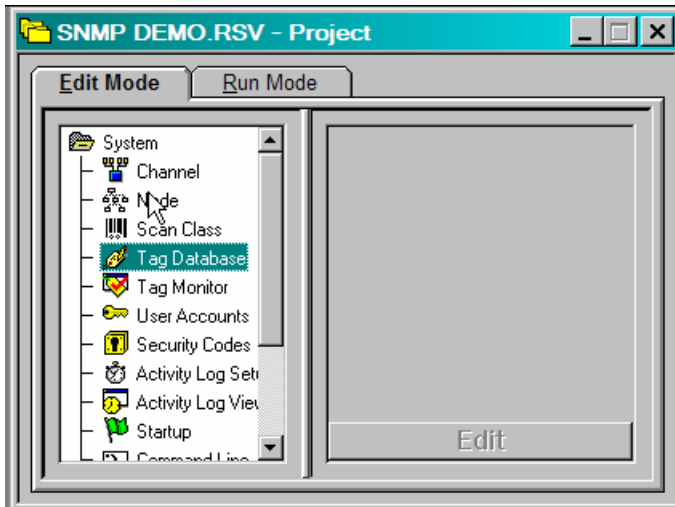
Section 2 – Configuring Tags

*It is important to match the type of tag used by **RSView32** with the **Data Type** used by **iSNMP**. To check that you are using the proper **Data Type**, open the **iSNMP Editor** and right click on the tag name and select **Properties**, to verify the **Data Type**, as seen below.*



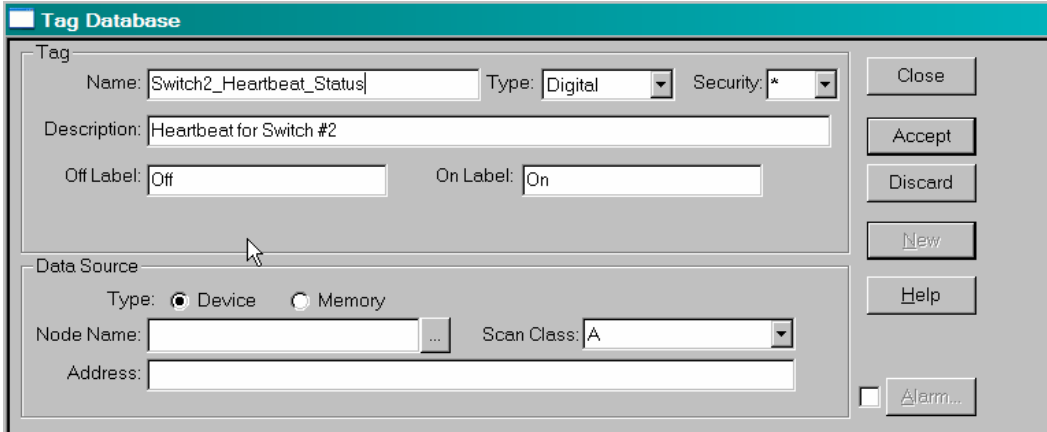
1. To launch the Tag Database:

Double click the **Tag Database** icon as seen below and the **Tag Database** dialog window will appear:



2. Create New Tags:

From within the Tag Database dialog box select **New** and fill the item boxes with the information relevant to the SNMP items you wish to monitor.



Tag Name: The unique tag name you wish to have associated with the SNMP item that you are monitoring.

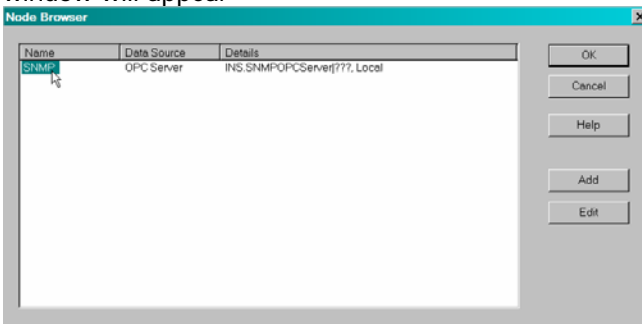
Tag Type: Select the appropriate type of tag from the drop down menu ensuring that the type matches the **Data Type** provided by the **iSNMP Editor**.

Tag Security: Select the security type from the drop down menu

Tag Description: The tag's description, it is helpful to be as descriptive as possible for future reference.

3. Assign a Data Source:

Select the **Browse** button  from the **Node Name** item field and the Node Browser dialog window will appear

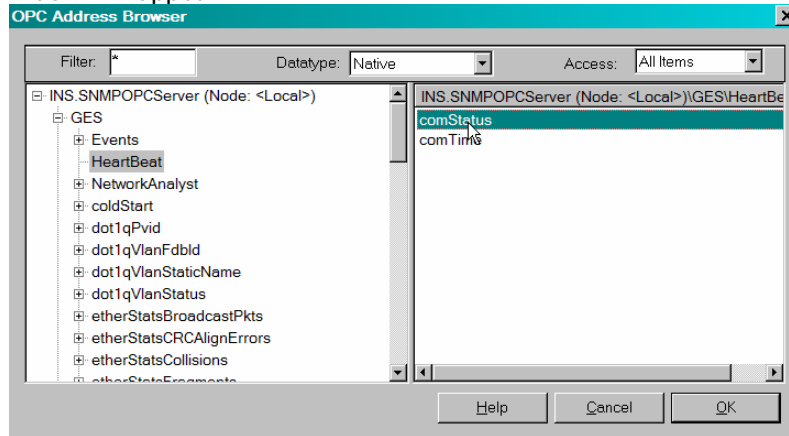


Name	Data Source	Details
SNMP	OPC Server	INS-SNMP(OPCServer)777.Local

Highlight the previously configured **Node** associated with the iSNMP OPC Server as reviewed in Section 1 of this tech note and then select **OK**. In our example we named the Node "SNMP".

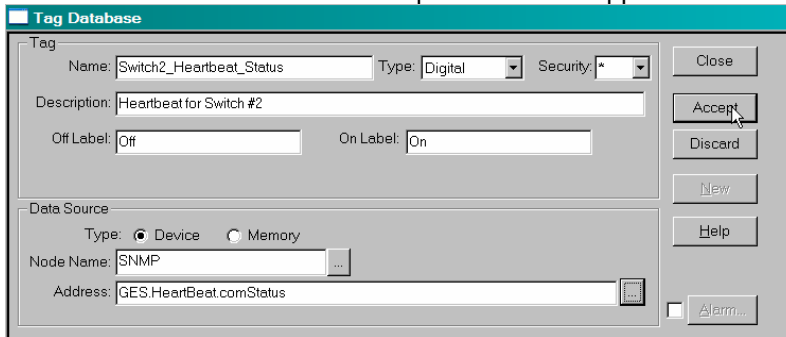
4. Assign the Address to the tag:

Select the **Browse** button from the **Address** item field and the **OPC Address Browser** dialog window will appear.



Expand the INS.SNMPOPCServer group clicking the + icon to reveal the previously configured SNMP devices that you wish to monitor. Further expand the network device to reveal the individual OPC items that are available for monitoring. Once you have found the actual item that you want this tag to monitor select **OK**. In our example we are monitoring the Heartbeat of the GES switch.

You can now see that the full OPC path has been applied to the **Address** item field.



Select **Accept** to accept the tag's configuration. The tag is now ready to be used within **Displays** and **Alarms**.

Repeat these steps to monitor any other iSNMP items within your RSVIEW32 Project as needed. Different Tag Types (i.e. Analog, Digital, String) have different variables associated with them; these variables need to be set to fit your Project needs as well as the constraints of the individual SNMP OPC item being monitored.

For a list of commonly monitored variables for a variety of network devices, please visit the following URL.

<http://www.coisoftware.com/support/?wtpaper=011>